



## HISTORY



MEDMIX CENTER KFT. WAS FOUNDED ON 18TH SEPTEMBER, 1997. IN THE BEGINNING WE WERE WORKING ON THE DESIGN AND PLANNING OF PRIVATE HOUSES AND THE CO-DESIGN OF LARGE PROJECTS AS A SUBCONTRACTOR.

IN 2001 WE WON THE COMPETITION TO DESIGN THE INTERNAL MEDICINE DEPARTMENT OF THE NATIONAL INSTITUTE OF ONCOLOGY, BUDAPEST. IT WAS A HUGE CHALLENGE, BECAUSE FOR MEDMIX CENTER THIS WAS THE FIRST LARGE SCALE GENERAL PLANNING PROJECT. SINCE 2006 EVERY YEAR WE ARE ABLE TO PROVIDE WORK FOR MORE QUALIFIED YOUNG PEOPLE. OUR COLLEAGUES ARE YOUNG ARCHITECTS WHO WE WOULD LIKE TO GIVE OUR KNOWLEDGE TO.

WE HAVE RECEIVED THE TÜVNORD DIN EN ISO 9001:2008 QUALITY MANAGEMENT SYSTEM CERTIFICATE IN 2008 IN THE FIELDS OF ARCHITECTURE AND CIVIL ENGINEERING. WE HAVE BEEN IMPROVING OUR QUALITY MANAGEMENT SYSTEM EVEN MORE SINCE THEN. IN FEBRUARY 2011 WE HAVE RECEIVED THE MSZ ISO/IEC 27001:2006 CERTIFICATE BY FOLLOWING THE STANDARDS OF INFORMATION SYSTEM SECURITY CONTROL.

OUR KEY AIM IS TO KEEP OUR MARKETS AND REPUTATION WON IN THE FIELDS OF DESIGN, ENGINEERING AND CONSULTANCY, AND TO CONQUER NEW MARKETS AS WELL. TO REACH IT WE ARE WORKING WITH COLLEAGUES AND SUBCONTRACTORS WITH HIGH PROFESSIONAL QUALIFICATION AND EXPERIENCE. FOR OUR COLLEAGUES WE PROVIDE PROFESSIONAL TECHNICAL BACKGROUND AND THE TO ATTEND COURSES TO IMPROVE SKILLS AND COMPETENCES. WE THINK FAIR BUSINESS ATTITUDE AND ASPIRING TO MEET CUSTOMER REQUIREMENTS MAXIMALLY ARE IMPORTANT KEYS TO MAKE A DESIGN PROJECT SUCCESSFUL.

### INFO

OWNERSHIP: 100% PRIVATE

STAFF: 8 EMPLOYEES

CAPITAL STOCK: 3 MILLION FORINTS

LOANS AND DEBT: 0

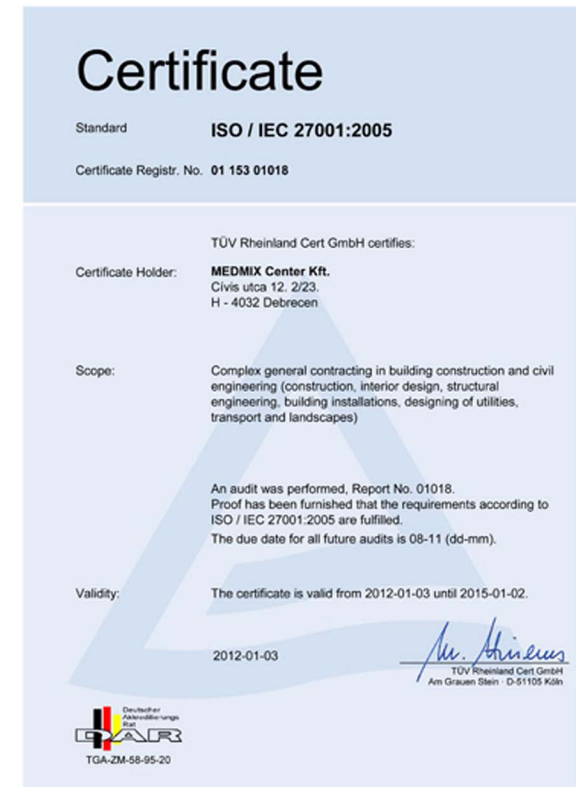
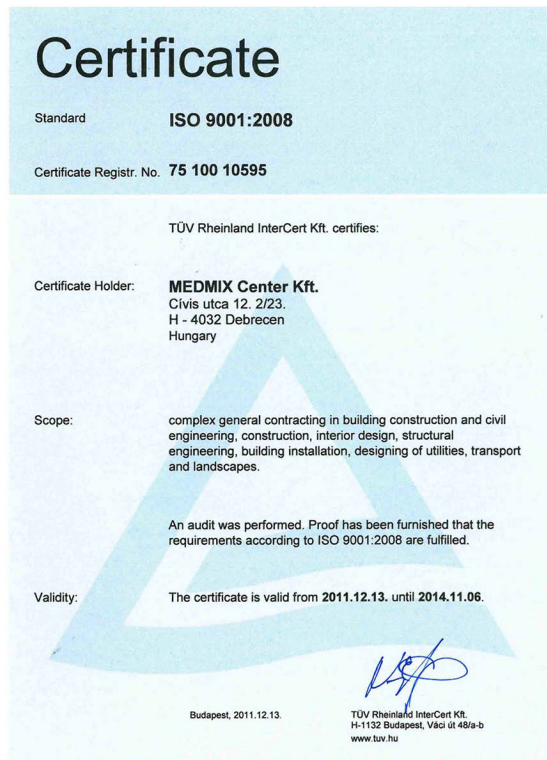
NUMBER OF OFFICES: 3 (INCLUDING 1 FULLY FURNISHED AND TECHNICALLY EQUIPPED SPARE OFFICE WITH 8 WORKSTATIONS)

## ISO CERTIFICATION

### ISO certificate:

2008 **TÜVRheinland DIN EN ISO 9001:2008** - Complex and general contracting in building construction and civil engineering, construction, interior design, structural engineering, building installation, designing of utilities, transport and landscapes

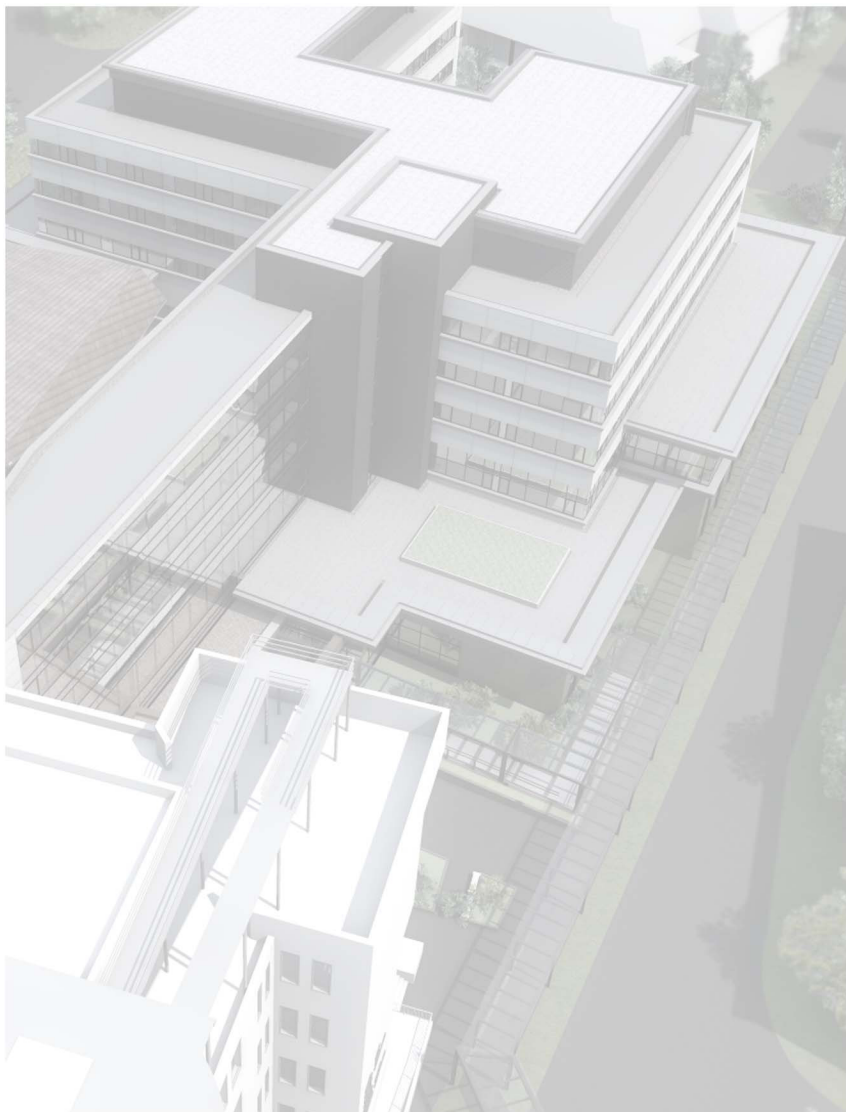
2011 **MSZ ISO/IEC 27001:2005** - Quality management - Complex and general contracting in building construction and civil engineering, construction, interior design, structural engineering, building installation, designing of utilities, transport and landscapes



www.tuv.com



## LIST OF REFERENCES

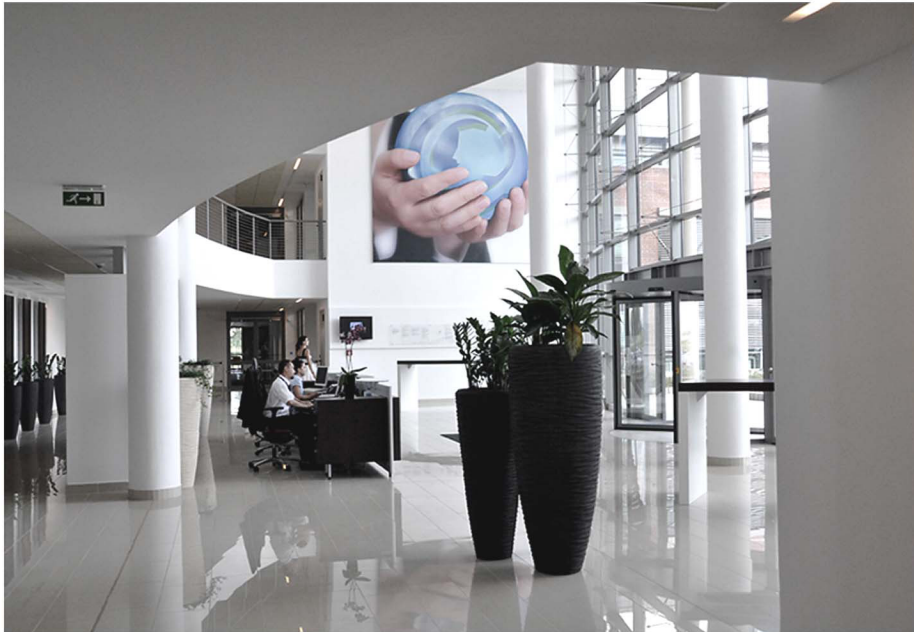


2012	SERVICE CENTER-Conference Center, 1910 m <sup>2</sup> ,	Téglás
2010	NATIONAL INSTITUTE OF ONCOLOGY - CORRIDOR CONNECTING THE 3RD FLOOR OF BUILDING 8 AND 1ST FLOOR OF BUILDING 11A, 24 m <sup>2</sup> ,	Budapest
	PÁNDY KÁLMÁN HOSPITAL - NEW SURGERY BUILDING-hospital, 11500 m <sup>2</sup> ,	Gyula
	RÉTHY PÁL HOSPITAL INTERIOR RENOVATION AND EXTENSION-hospital, 1795 m <sup>2</sup> ,	Békéscsaba
2009	NATIONAL INSTITUTE OF ONCOLOGY - BUILDING 11A-hospital, 2752 m <sup>2</sup> ,	
	NATIONAL INSTITUTE OF ONCOLOGY - BUILDING 3-hospital, 7084 m <sup>2</sup> ,	
	NATIONAL INSTITUTE OF ONCOLOGY BUILDING 14 INTERIOR RENOVATION-hospital, 1165 m <sup>2</sup> ,	Budapest
2008	IT-SERVICES HUNGARY OFFICE BUILDING-office building, 15387 m <sup>2</sup> ,	Debrecen
2001	NATIONAL INSTITUTE OF ONCOLOGY - BUILDING 8-hospital, 5800 m <sup>2</sup> ,	Budapest
1999	OPEL OLYMPIA SHOWROOM AND CAR SERVICE-showroom, 2200 m <sup>2</sup> ,	Budapest
	PROJECT PERFORMED AS A SUBCONTRACTOR	
2010	KENÉZY GYULA HOSPITAL - MR BUILDING-hospital, 210 m <sup>2</sup> ,	Debrecen
	EARL TISZA ISTVÁN HOSPITAL, SURGERY BUILDING-hospital, 4228 m <sup>2</sup> ,	Berettyóújfalu
	EARL TISZA ISTVÁN HOSPITAL, REHABILITATION INSTITUTE OF LOCOMOTOR DISORDERS-hospital, 2585 m <sup>2</sup> ,	Berettyóújfalu
	EARL TISZA ISTVÁN HOSPITAL PRELIMINARY DESIGN-hospital, 8695 m <sup>2</sup> ,	Berettyóújfalu
2009	NAGYERDŐ WELLNES CENTRE-leisure centre, 3449 m <sup>2</sup> ,	Debrecen
2008	IN-VITRO LABS, MEDICAL AND HEALTH SCIENCE CENTER-laboratory building 6847 m <sup>2</sup> ,	Debrecen
2006	HPS PRISON - PRELIMINARY DESIGN-prison,45000 m <sup>2</sup> ,	Szombathely
	MÁTÉSZALKA HOSPITAL - HOSPITAL EXTENSION-hospital, 3312 m <sup>2</sup> ,	Mátészalka
2005	KENÉZY GYULA HOSPITAL - NEW DIAGNOSTIC BLOCK-hospital, 4200 m <sup>2</sup> ,	Debrecen
	COMMUNITY CENTER - PRELIMINARY DESIGN- community center, 6133 m <sup>2</sup> ,	Hajdúsámson

## MAIN REFERENCES

2008	IT-SERVICES HUNGARY OFFICE BUILDING, 15387 m <sup>2</sup> ,	Debrecen
2009	NATIONAL INSTITUTE OF ONCOLOGY - BUILDING 11A, 2752 m <sup>2</sup> ,	Budapest
2009	NATIONAL INSTITUTE OF ONCOLOGY - BUILDING 3, 7084 m <sup>2</sup> ,	Budapest
2010	RÉTHY PÁL HOSPITAL - EXTENSION, 1795 m <sup>2</sup> ,	Békéscsaba
2010	PÁNDY KÁLMÁN HOSPITAL - SURGERY BUILDING, 11500 m <sup>2</sup> ,	Gyula
2012	TÉGLÁS SERVICE CENTRE, 1910 m <sup>2</sup> ,	Téglás



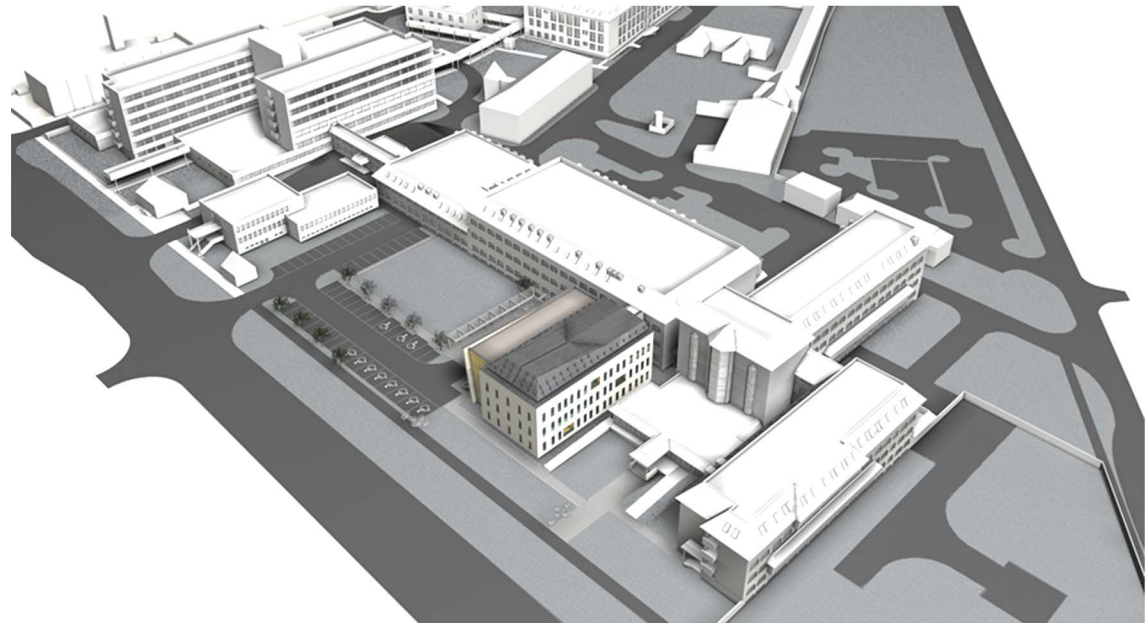


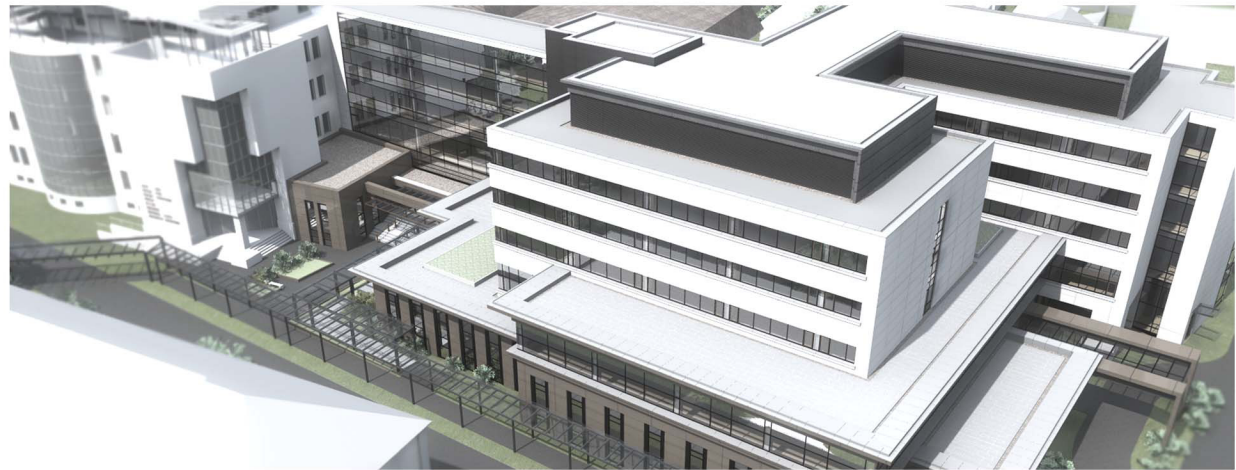








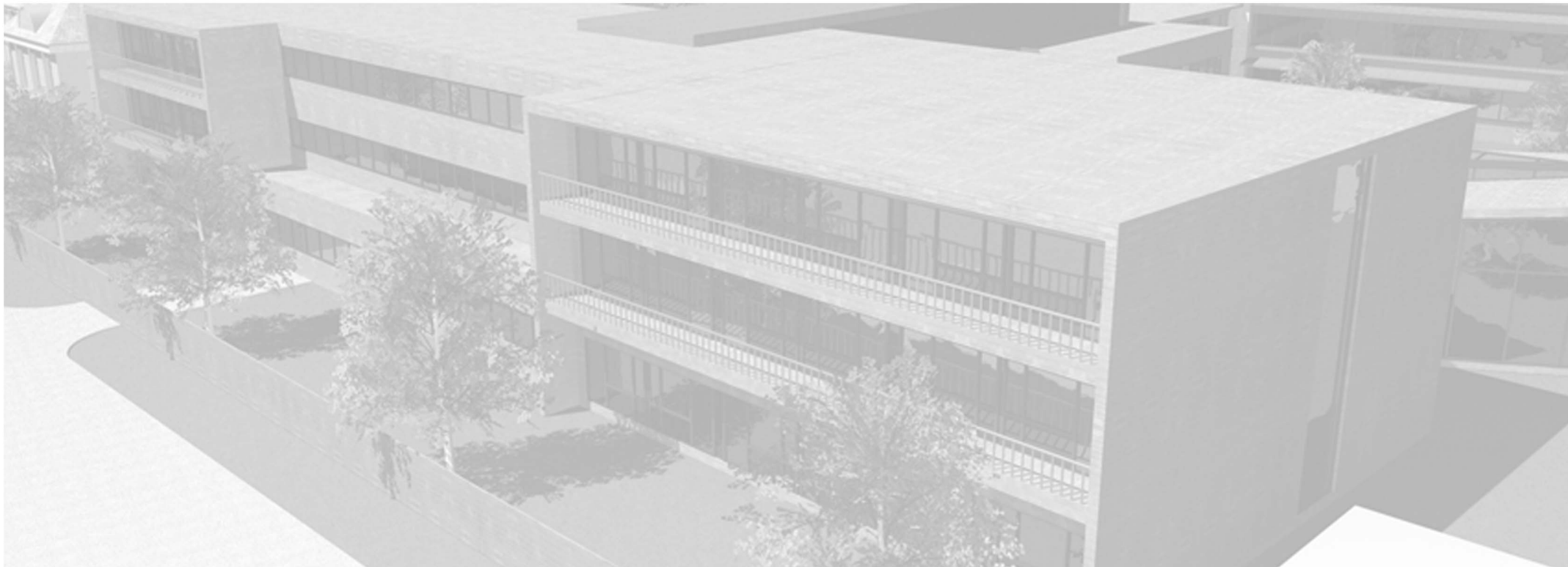




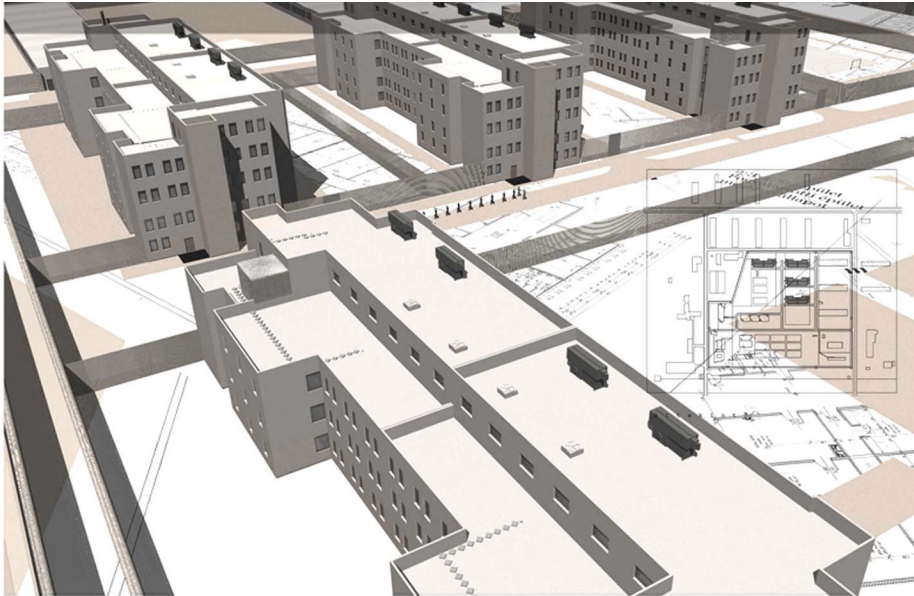


## PROJECT PERFORMED AS A SUBCONTRACTOR

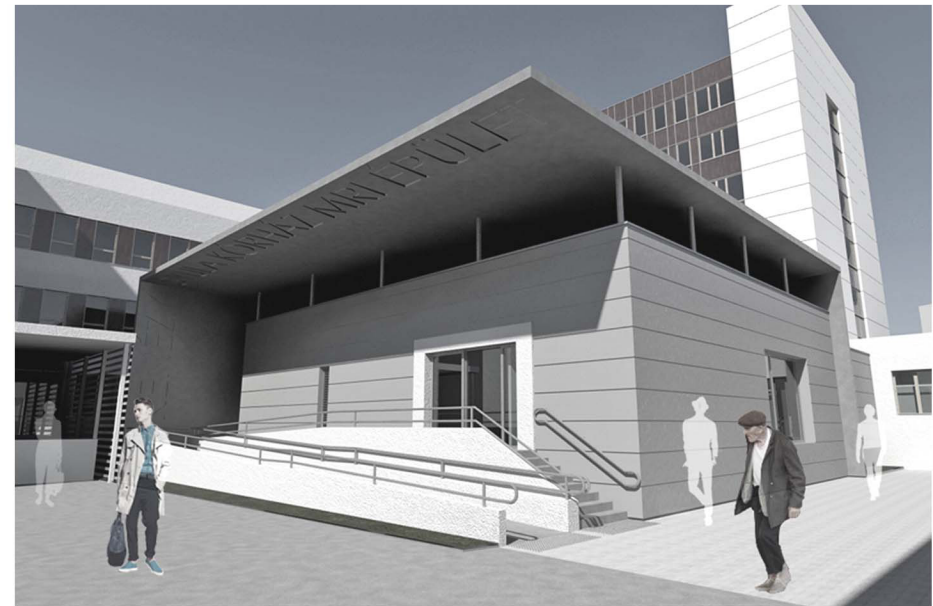
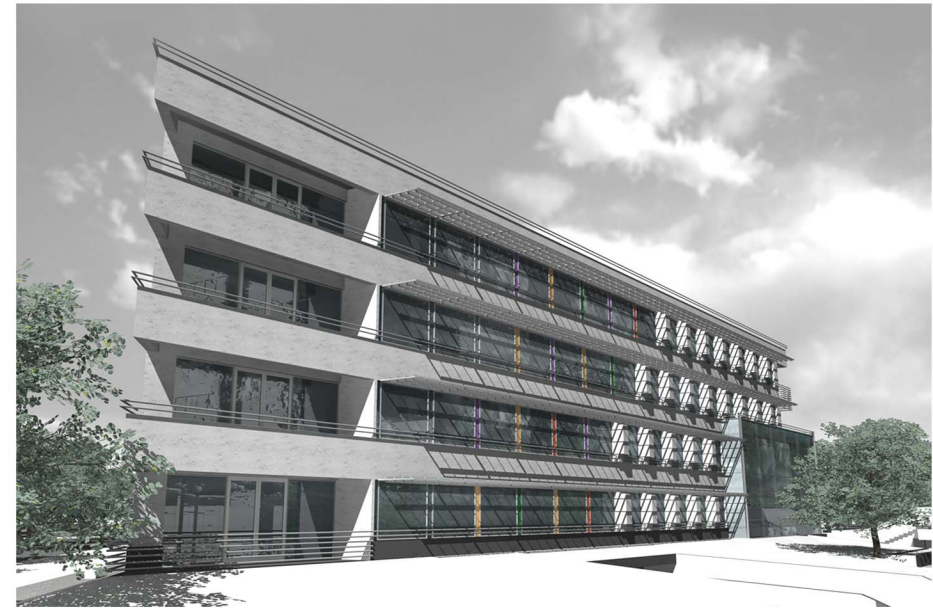
- |      |  |                |
|------|--|----------------|
| 2010 | EARL TISZA ISTVÁN HOSPITAL, REHABILITATION INSTITUTE OF LOCOMOTOR DISORDERS, 2585 m <sup>2</sup> , | Berettyóújfalu |
| 2010 | EARL TISZA ISTVÁN HOSPITAL, SURGERY BLOCK, 4228 m <sup>2</sup> ,                                   | Berettyóújfalu |
| 2010 | MR BUILDING, 210 m <sup>2</sup> ,  |                |
| 2008 | IN-VITRO LABS - PREMILINARY DESIGN, 6847m <sup>2</sup> ,   | Debrecen       |
| 2006 | HPS PRISON - PREMILINARY DESIGN, 45000 m <sup>2</sup> ,  | Szombathely    |
| 2005 | KENÉZY GYULA HOSPITAL - NEW DIAGNOSTIC BLOCK, 4200 m <sup>2</sup> ,                                | Debrecen       |



Hungarian Prison Service - Preliminary design, Szombathely, 2006, 45000 m<sup>2</sup>



In-Vitro Labs - Preliminary design, Debrecen, 2008, 6847 m<sup>2</sup>



MR Building, Debrecen, 2010, 210 m<sup>2</sup>

Earl Tisza István Hospital - Surgery Bulding, Berettyóújfalu, 2010, 4228 m<sup>2</sup>



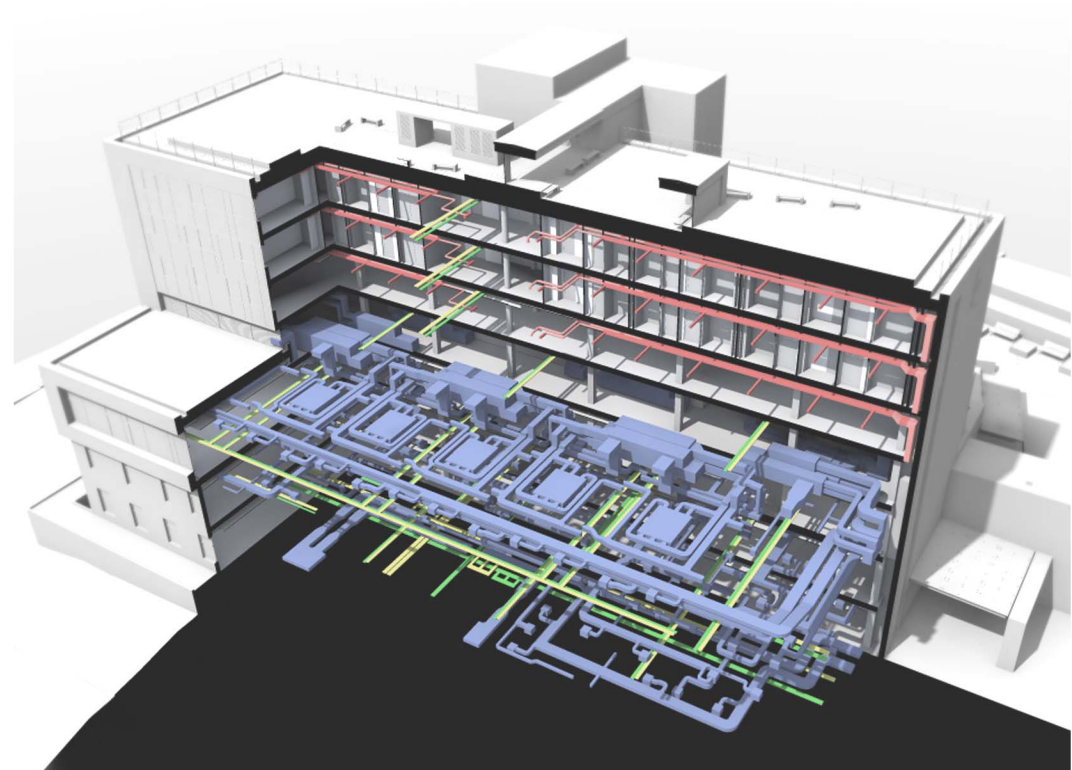
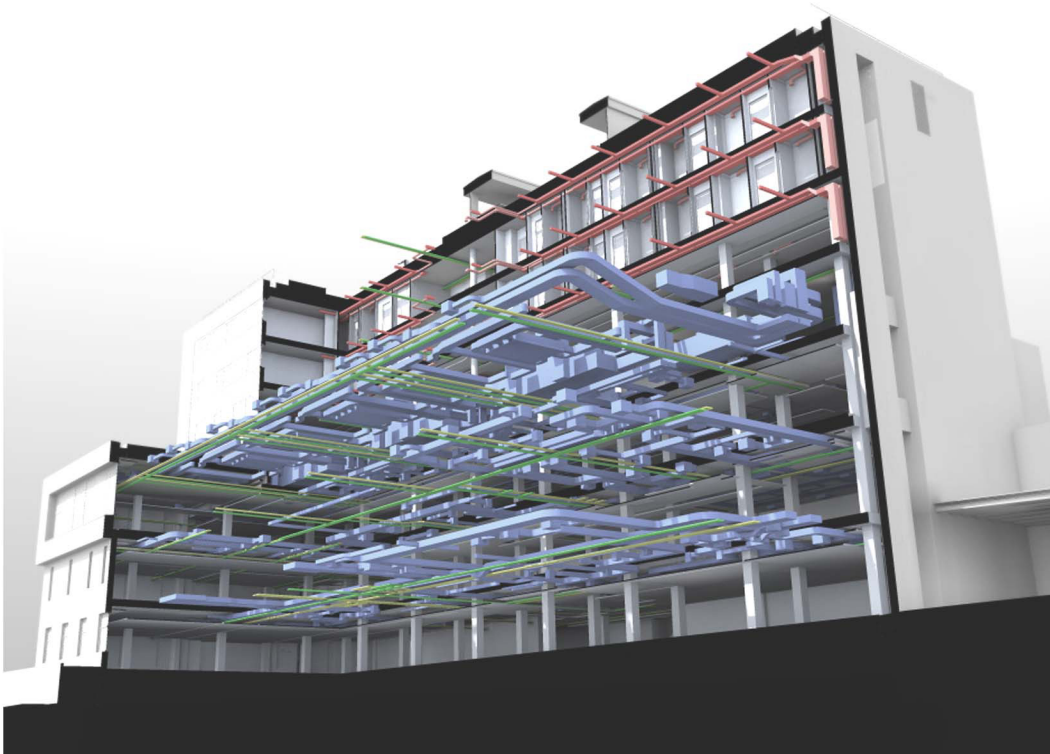
Earl Tisza István Hospital - Rehabilitation Institute Of Locomotor Disorders, Berettyóújfalu, 2010, 2585 m<sup>2</sup>



## 3D MODEL /BUILDING SERVICES

It shows complex view from all the parts of the mechanical installations and during designing helps to find mistakes.

The edited mechanical systems give a kind of visual guideline for the contractor when buildings are being under constructed.





## TECHNICAL BACKGROUND



## INFORMATION BACKGROUND

DELL POWEREDGETM 2900 III (file server)

DELL PRECISIONTM T3500 (web server)

FTP FILE SERVER (2 pieces)

DELL PRECISIONTM T3500 (midle performance workstation - 3 pieces)

DELL PRECISIONTM T3500 (high performance workstation - 8 pieces)

## PRINTERS, SCANNERS

HP DESIGNJET 100 plus nr (size: A/1 - color photo printer)

HP DESIGNJET Z3200 (size: A/0 - color photo printer)

HP DESKJET 1220 C (size: A/3 - photo printer)

OCé 940 (folding machine)

OCé COLORWAVE 300 (size: A/0 - color printer and scanner)

OCé CS 2344 (size: A/0 - color photo printer)

OCé TDS 600 (size: A/0 black and white printer and scanner)

PHILIPS LASER MFD 6080 (fax)

RICOH AFICIO MP 2510 PCL (size: A/3 and A/4 black-and-white high performance printer and scanner)

## PRINTING, SCANNING PRICES

	net prices	tax	gross prices
<b>BLACK&amp;WHITE PRINTING AND SCANNING</b>			
A/4	12,-	3,-	15,-/page
A/3	24,-	6,-	30,-/page
<b>COLOR COPYING, PRINTING AND SCANNING</b>			
A/4	144,-	36,-	180,-/page
A/3	288,-	72,-	360,-/page
<b>COPYING (BLACK&amp;WHITE)</b>			
A/4	12,-	3,-	15,-/page
A/4 binded	16,-	4,-	20,-/page
A/4 color paper	16,-	4,-	20,-/page
A/4 tracing paper	40,-	10,-	50,-/page
A/4 self-adhesive paper	68,-	17,-	85,-/page
A/4 clear plastic cover	100,-	25,-	125,-/page
A/4 self-adhesive foil	240,-	60,-	300,-/page
A/3	24,-	6,-	30,-/page
A/3 tracing paper	80,-	20,-	100,-/page
A/3 binded	32,-	8,-	40,-/page
<b>XEROX COPY</b>			
Paper	480,-	120,-	600,-/m <sup>2</sup>
Binded	536,-	134,-	670,-/m <sup>2</sup>
Tracing paper	1 000,-	250,-	1 250,-/m <sup>2</sup>
Copy and zoom, paper	600,-	150,-	750,-/m <sup>2</sup>
Copy and zoom, tracing paper	1 120,-	280,-	1 400,-/m <sup>2</sup>
<b>PLAN SCANNING</b>			
	1 040,-	260,-	1 300,-/m <sup>2</sup>
<b>COLOR PLAN PRINTING</b>			
1.	1 280,-	320,-	1 600,-/m <sup>2</sup>
2.	1 600,-	400,-	2 000,-/m <sup>2</sup>
3.	2 000,-	500,-	2 500,-/m <sup>2</sup>
<b>PLAN PRINTING</b>			
Paper	1 040,-	260,-	1 300,-/m <sup>2</sup>
Tracing paper	1 200,-	300,-	1 500,-/m <sup>2</sup>
<b>SPIRAL BINDING (include front and back page)</b>			
A/4 up to 50 page	288,-	72,-	360,-/
up to 100 page	432,-	108,-	540,-/
up to 200 page	768,-	192,-	960,-/
up to 500 page	960,-	240,-	1 200,-/
A/3 up to 50 page	400,-	100,-	500,-/
up to 100 page	560,-	140,-	700,-/
up to 200 page	880,-	220,-	1 100,-/
up to 500 page	1 200,-	300,-	1 500,-/

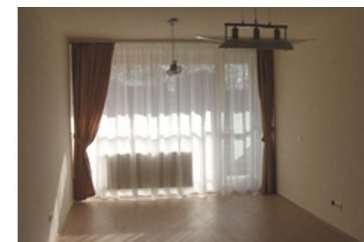
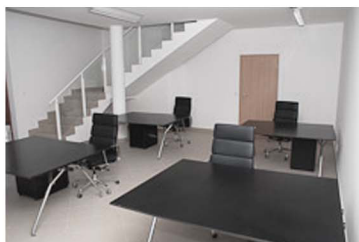
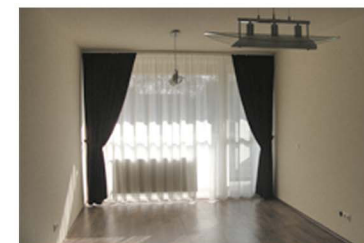
## PROPERTY LETTING

Nyugati street 24.  
estate

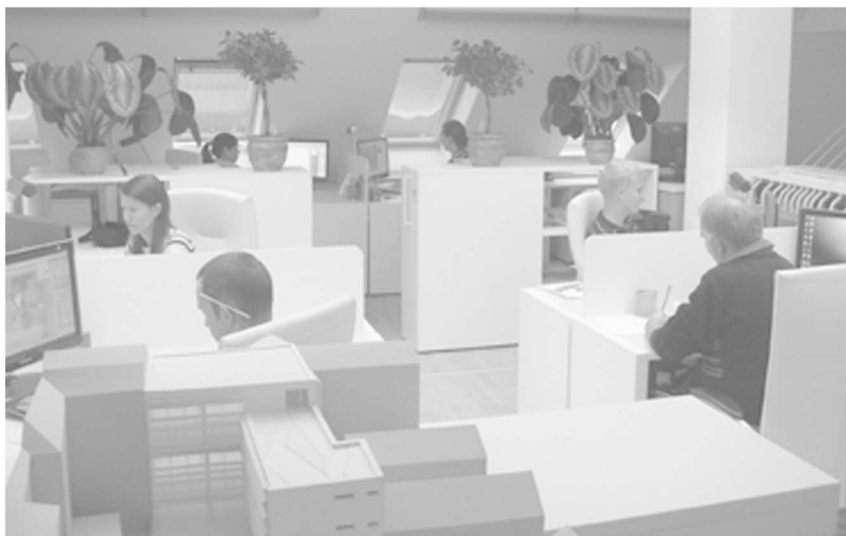
Halköz Shopping Center,  
Simonffy street. 4-6. foreground 3.  
parlor

Halköz 3./A - parlor

Arany János street 56. I. floor/1., 2., 3. flat



## COMPANY PROFILE, CONTACTS



### COMPANY PROFILE

- complex general contracting  
(architecture, interior design, structural engineering, building services engineering, electrical engineering, low voltage system design, acoustic design, environmental protection, fire safety plan)
- Special technologies: medical technology planning, laundry technology planning, kitchen technology planning
- Special services: expertising, plan review, consulting)
- Civil engineering  
(utilities, traffic planning and road design, garden and landscape planning)
- Office and shop leasing (offices, parlors)
- Advertising graphic –scanning, printing, copying

### CONTACTS

Manager:	Bakó István	Phone: +36 (52) 523-650
Main address:	4032 Debrecen Cívics street 12. II. 23.	Phone: +36 (52) 523-651
Office address:	4025 Debrecen Arany János street 56.	Fax: +36 (52) 523-652
Postal address:	4015 Debrecen P.O. box 54.	Mobile: +36 (30) 245-9060
Email:	titkarsag@medmixcenter.hu	Mobile: +36 (30) 850-4258
Web:	www.medmixcenter.com	